



VANGUARD

LENGTH 78' 4" (23.86M) **BUILDER** NAVAL YACHTS **YEAR** 2023
GUESTS 8 **CABINS** 3 **ASKING PRICE** \$3,980,000

OVERVIEW

Beam	16ft 11in (5.15m)	Exterior Designer	Naval Yachts
Draft	4ft 4in (1.22m)	Interior Designer	Arista Marine
Speed	9/11 Knots	Flag	United Kingdom
Construction	aluminum	Location	Bluffton / United States
Gross Tonnage	66 t	Classification	Bureau Veritas
Engines	2x John Deere 4045 AFM85 M1 160 hp / 119 kW		

MIKE FINNEGAN

+1 619 261 5093

Mike.Finnegan@NorthropandJohnson.com

*This document is not contractual. All specifications are given in good faith and offered for informational purposes only. The publisher and company do not warrant or assume any legal liability or responsibility for the accuracy, completeness, or usefulness of any information and/or images displayed. Yacht inventory, specifications and charter prices are subject to change without prior notice. None of the text and/or images used in this brochure may be reproduced without written consent from the publisher.

* NOT FOR SALE TO U.S. RESIDENTS WHILE IN U.S. WATERS



















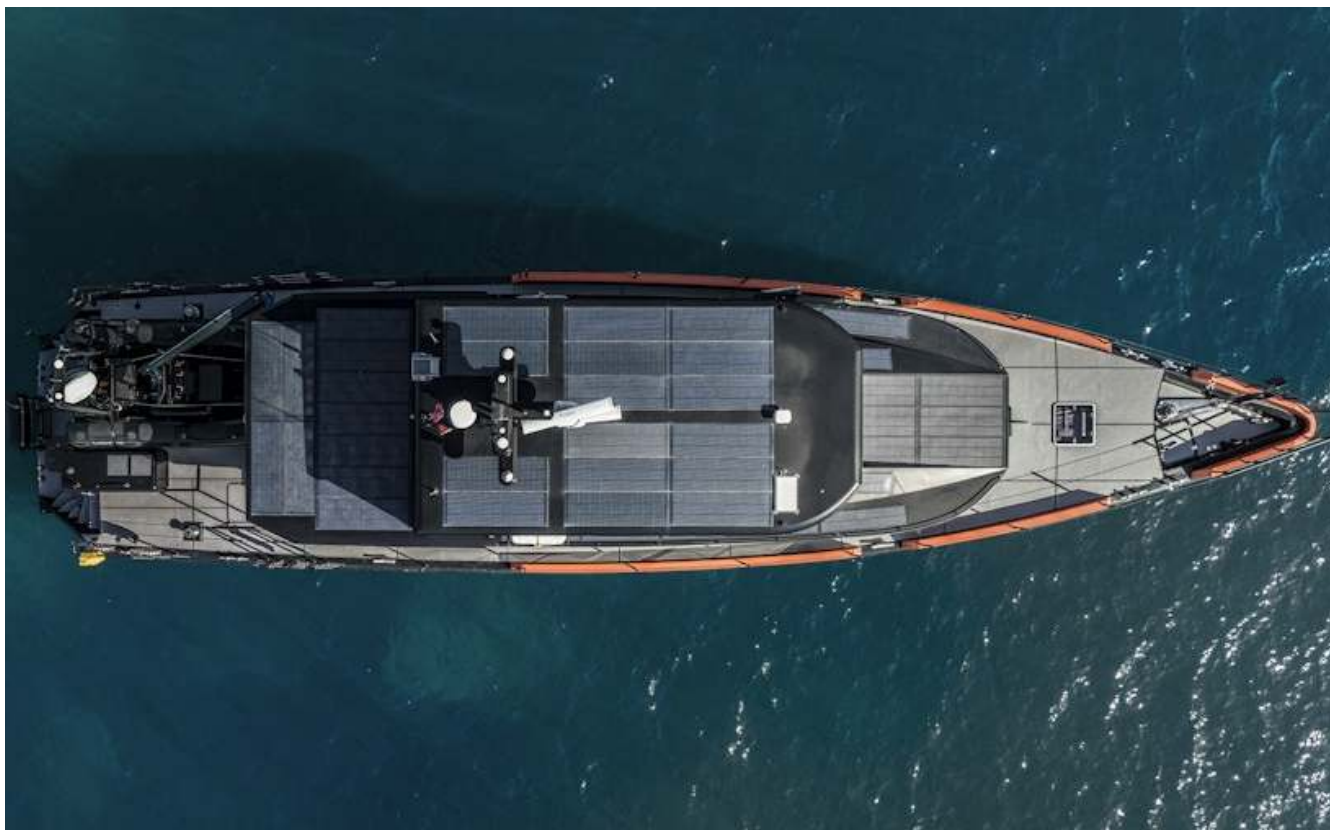




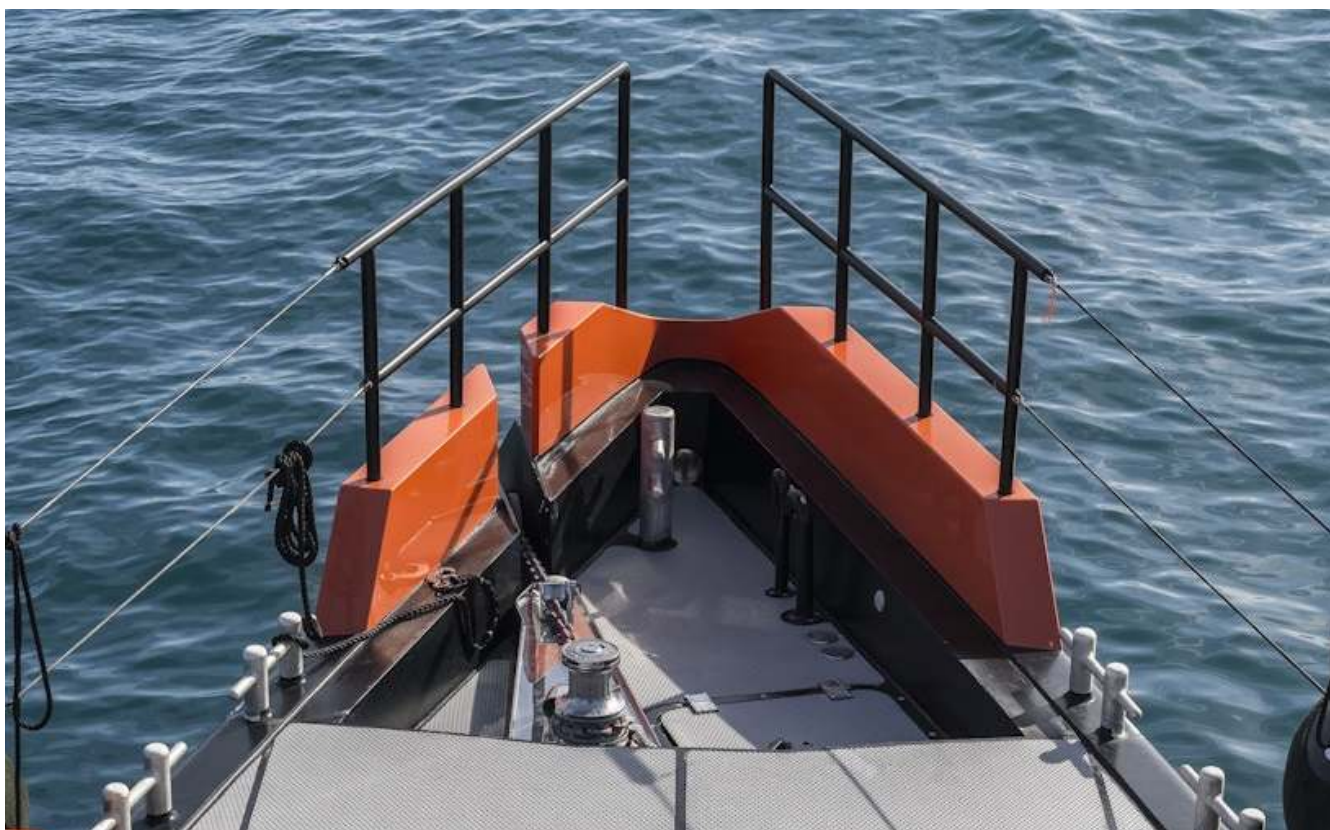












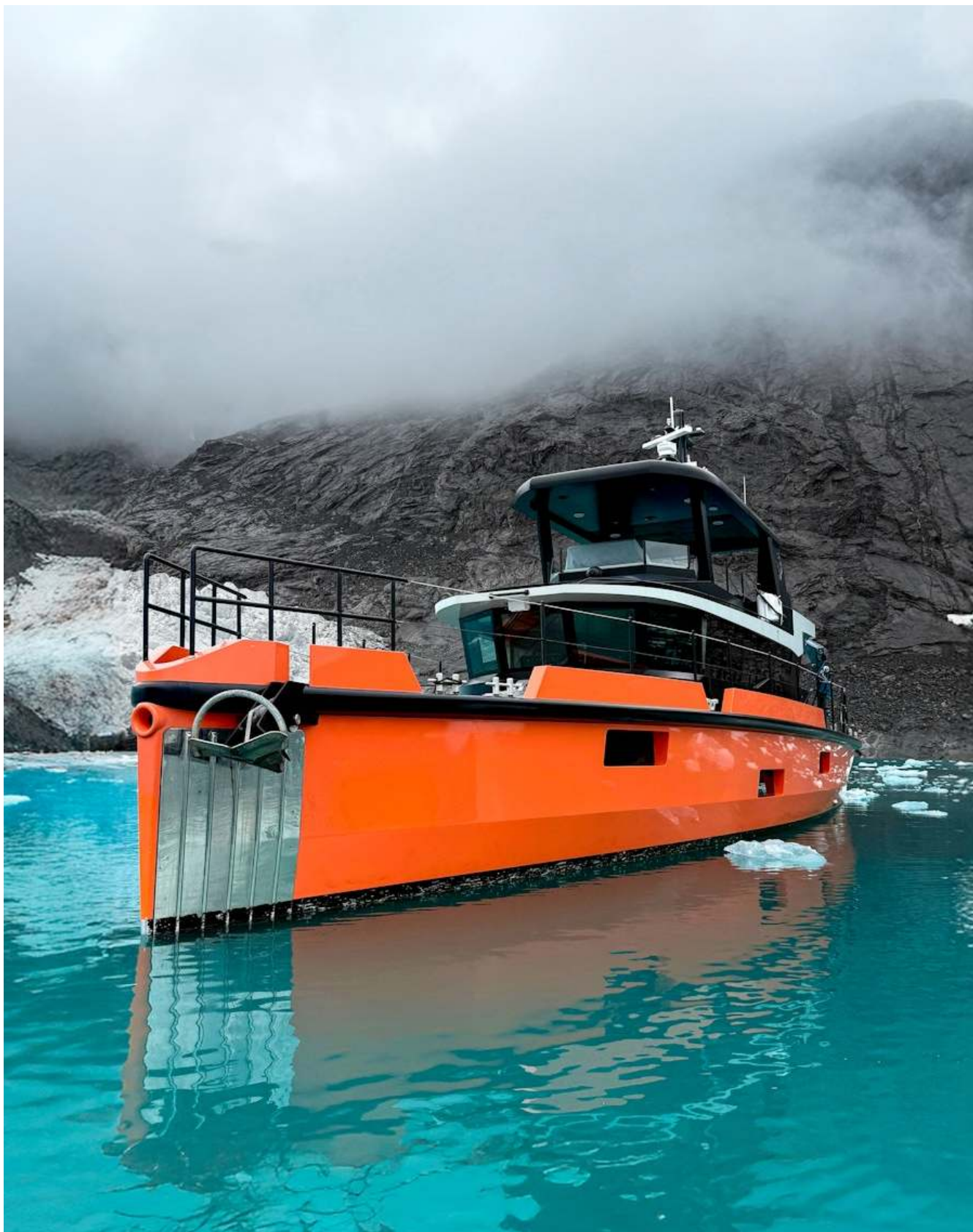












*This document is not contractual. All specifications are given in good faith and offered for informational purposes only. The publisher and company do not warrant or assume any legal liability or responsibility for the accuracy, completeness, or usefulness of any information and/or images displayed. Yacht inventory, specifications and charter prices are subject to change without prior notice. None of the text and/or images used in this brochure may be reproduced without written consent from the publisher.

MAIN CHARACTERISTICS

Built by	Naval Yachts
Year	2023
Length	78' 4" (23.86m)
Beam	16ft 11in (5.15m)
Draft	4ft 4in (1.22m)
Gross Tonnage	66 t
Classification	Bureau Veritas

CAPACITIES

Fuel capacity	9,885 l / 2,611 US g
Water capacity	7,500 l / 1,981 US g
Range	7,000 @ 9 Knots
Cruising Speed	9 Knots
Max Speed	11 Knots

MACHINERY

Engines	2x John Deere 4045 AFM85 M1 160 hp / 119 kW
Gearboxes	Twin Disc 2.5:1 step down marine gearboxes
Steering	Wills Ridley fully redundant electro-hydraulic steering integrated with Praxis Automation steering control system
Shore power	Single phase 50/60hz, 25KVA 3 phase 50/60hz 25KVA
Batteries	2 X 60 kWh power batteries, 3 x 7 kWh house batteries
Air Conditioning	Webasto Blue Cool system (V Cool) chiller + hydronic heating
Bow Thruster	15 kW Sidepower
Helicopter Capable	No
Lift/Elevator	No

OVERVIEW

To call VANGUARD a capable and proven long-range expedition yacht would be an understatement. Since her launch in 2023, she has covered over 9,000 nautical miles, reaching destinations as far north as Greenland. The accomplishments of VANGUARD are often sought after but rarely achieved to the level this compact and capable platform has demonstrated within just 20 months of her delivery.

Built with today's cutting-edge technologies to maximize efficiency and redundancy, VANGUARD's key advancements include a diesel-electric Praxis hybrid propulsion system, advanced DMS Magnus Master stabilization, ice-reinforced hull design, a commercial-grade dynamic positioning system, and a network of energy management systems to optimize efficiency. These features place her in a class of her own. VANGUARD was constructed to standards not previously seen in her size range and not only in her advanced systems, but also in her fit and finish. Her custom interior, designed by Arista Marine, and the meticulous attention to detail in her exterior finishing by Naval Yachts elevate her into a new standard that balances function and efficiency with refined aesthetics.

Currently, Vanguard is finalizing her summer transit to Greenland with two experienced ice pilots onboard, putting her purpose-built hull into action and exploring truly off-the-beaten-path destinations. Upon completing her voyage VANGUARD will be returning to Fort Lauderdale this fall.

If expedition is your passion and you are looking to break away from traditional cruising standards, schedule a showing to see how VANGUARD has redefined what is possible in a modern expedition yacht.

MAIN FEATURES

- ▶ Exceptional long-range capability
- ▶ Ice-reinforced hull
- ▶ State of art diesel electric hybrid propulsion system
- ▶ Equipped with Commercial dynamic positioning system
- ▶ Advanced DMS Magnusmaster stabilization system
- ▶ Unmatched efficiency for long range cruising and a cruise speed burn rate of 3.5L/NM with a range of over 7,000 NM

INTERIOR

VANGUARD's interior is designed to feel light, open and airy, with pale timber finishes accented by rich dark contrasts throughout.

The main deck features a modern open-plan layout that combines the helm station, galley and main salon.

Below, the lower deck offers well-appointed staterooms, each with en-suite facilities for maximum comfort and privacy.

ACCOMMODATIONS

VANGUARD offers accommodations for up to eight guests, with six in three en-suite staterooms below and an optional convertible salon berth for two additional guests. The full-beam owner's stateroom features a centered king berth, integrated settee, and an en-suite with glass-enclosed shower. The VIP cabin includes a centerline double with sofa. The third guest stateroom offers fixed twin bunks and sofa seating.

CONSTRUCTION

Aluminum hull and superstructure with Treadmaster deck.

KEY SPECIFICATIONS

DIMENSIONS

Length Overall: 78' 4" (23.86m)

Beam: 16' 11" (5.15m)

Draft: 4' 4" (1.3m)

Air Draft: (8.15m)

CAPACITIES

Fuel Capacity: 2,611 USG (9,885 l)

Water Capacity: 1,981 USG (7,500 l) stored in 4 tanks

Grey Water: 108 USG (410 l)

Black Water: 159 USG (600 l)

SPEED & RANGE

Maximum: 11 knots

Cruise: 9 knots

Range: 7000 nm

MAIN ENGINES

2 x John Deere 4045 AFM85 M1, 160hp each, continuous

Praxis hybrid drive allows diesel or electric propulsion, optimizing fuel efficiency (7.5 knots at 3.5L/nm)

Twin Disc 2.5:1 step down marine gearboxes

ELECTRIC POWER

Hybrid power system: 2 x 60kWh/600V DC LIPO batteries and a 6kW solar array

House batteries capacity: 3 x 7 Kwh Ah 24v DC LIPO

Shore Power: Single phase 50/60hz, 25KVA 3 phase 50/60hz 25KVA

The yacht can use shore power (single/three phase) and solar to charge the batteries.

AIR CONDITIONING

Webasto Blue Cool system (V Cool) chiller + hydronic heating

OTHER MACHINERY

Watermaker: Delfin watermaker, approx. 5.5-7L/min

Stabilizers: DMS MagnusMaster

Bow Thruster: 15 kW Sidepower

Steering System: Wills Ridley fully redundant electro-hydraulic steering integrated with Praxis Automation steering control system

Bilge Pumps: Electric, manual, and emergency fire pumps for water management.

Misc.: Praxis Dynamic Positioning System / Dockmate

NAVIGATION AND COMMUNICATION SYSTEM

SatCom: Starlink satellite internet; Iridium

VHF: DSC (fixed) and handheld units

2 x ICOM M510 E (VHF Short Distance Radio, loud hailer, fog horn, GPS, AIS, DSC NMEA 2000)
 Furuno GP-330B GPS Aerial
 Furuno DFF-3B Multibeam Sonar Sonar
 Furuno B54 Depth Transducer
 Furuno Airmar DST810 speed, depth, temp transducer
 Furuno FA170/GPA017S Class A AIS Transponder (inc display, transducer, antenna)
 Furuno WX220 Ultrasonic Weather Station
 Furuno TVA-03C/TVA-03V lightning arrester
 ICOM HM229B Command Mike
 Furuno NX700B Navtex rec
 Iridium Certus 2 x Iridium Sailor 4300 - above and below deck unit
 Furuno Felcom 19SASS Sat C Terminal (Inmarsat MINI C service)
 2 x Yellowbrick YB3i tracker handheld satellite phone
 Pepwave MAX BR1 MK2 4G Router
 Furuno SCX-21 GPS Satellite Compass
 Furuno PG-700 Fluxgate Compass
 Furuno NMEA0183 Junction
 One Web 2 x Kymeta U8 Aerial (Ethernet)

TENDER

5 m Highfield RIB with 100 hp Yamaha outboard
Nav equipment onboard include ICOM M510 E,
Furuno GP-1971F Plotter and Fish Finder, Furuno
525STID MSD Transducer, Furuno GP-330B GPS
Aerial

SAFETY SYSTEMS

SECURITY

FLIR day/night camera; CCTV coverage (integrated
with NAV displays.

FIRE FIGHTING EQUIPMENT

Portable extinguishers, a Praxis fire alarm system,
and emergency shutoff controls.

SAFETY EQUIPMENT

2 x SOLAS life rafts in canisters with hydrostatic
release

MOB sling

Life rings

DECK AND HULL

Anchor Windlass System: Maxwell combined anchor
windlass and capstan

Anchors: 110kg Rocna with 100m chain, and a
secondary Fortress anchor. Controlled via windlass
and aft kedging winches.

Crane: Puma tender crane

Passerelle

Swim Ladder: Swim Step fold-down

Navigational Lights

Spot Lights

Misc.: 10 x Majoni fenders, Dynema shore line and
transport bag

REMARKS

Not for sale to US residents while in US waters.